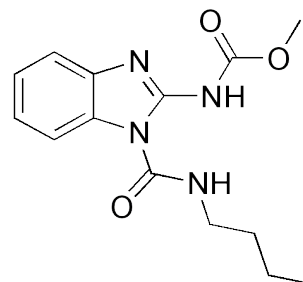


Benomyl 50%WP

Benomyl (also marketed as Benlate) is a fungicide introduced in 1968 by DuPont. Benomyl binds to microtubules, interfering with cell functions, such as meiosis and intracellular transportation. The selective toxicity of benomyl as a fungicide is possibly due to its heightened effect on fungal rather than mammalian microtubules.

Function:

It is a systemic benzimidazole fungicide that is selectively toxic to microorganisms and invertebrates, especially earthworms.



Uses and Dosage:

Crop	Pests	Rate of use	Application
Asparagus	Stem wilt	266.7-333.3 mg/kg	Spray
Pear tree	Pear scab	250-500 mg/kg	
Citrus	Citrus scab	833-1000 mg/kg	



Benefits:

- Benomyl is of such a low toxicity to mammals, it has been impossible to administer doses large enough to establish an LD50.
- Benomyl binds strongly to soil and does not dissolve in water to any great extent.

Note:

Benomyl maybe lead new born baby to anophthalmia or other birth defects.

